



# Howell Mountain Tract

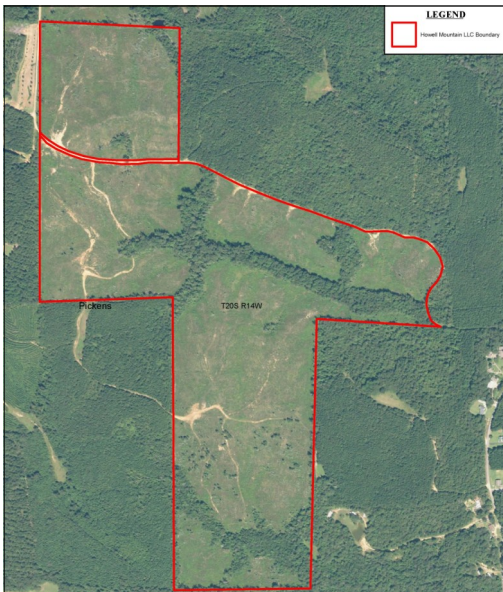
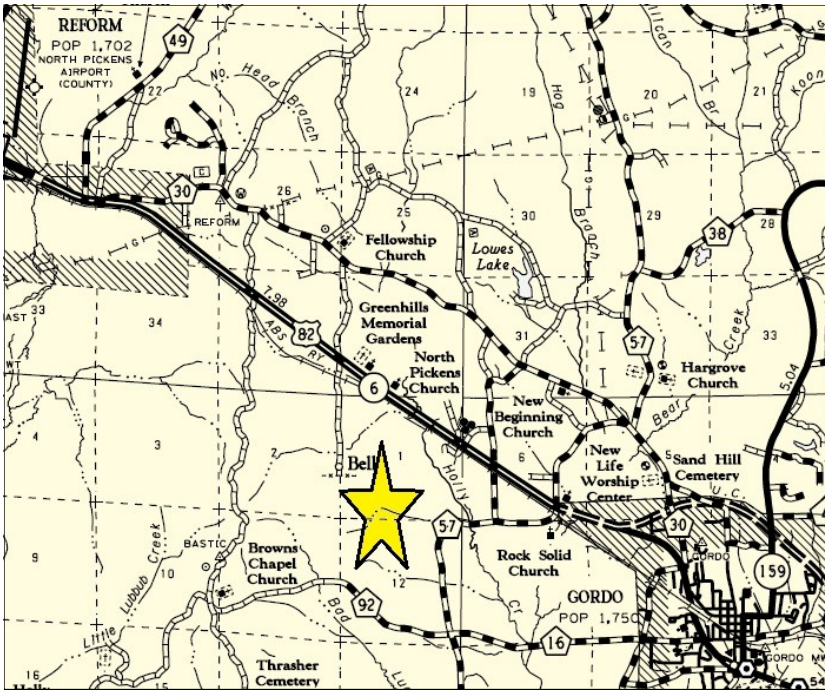
Pickens County, AL  
+/- 226 Acres  
Timberland / Hunting

New price reduction! \$439,500.00

Sections 1 and 12, Township 20 South, Range 14 West  
33.3358, -87.9540

P. O. Box 600  
Gordo, AL 35466  
205-364-7145  
Dale Lancaster, Broker

For more info: [www.midsouthforestryservices.com](http://www.midsouthforestryservices.com)



226 +/- acres of timberland located between Gordo and Reform in Pickens County, Alabama. This tract offers the best in rural hunting, and is conveniently located within 30 minutes of Tuscaloosa, Alabama and Columbus, Mississippi! The +/- 184 acre pine plantation established in 2015 further secures your investment and offers future income. The tract is accessible via vehicle or ATV by various trails and roads. An unnamed tributary off of Holly Creek flows through the property. Contact us to take a look at this tract today!

All information furnished is assumed to be accurate and correct. However, neither the property owner nor Midsouth Forestry Services warrant the accuracy of information furnished. Prospective buyers should satisfy themselves as to the accuracy of this information. No representation or warranties are expressed or implied as to the property, its condition, boundaries, access, acres, zoning, condition of title or fair market value.